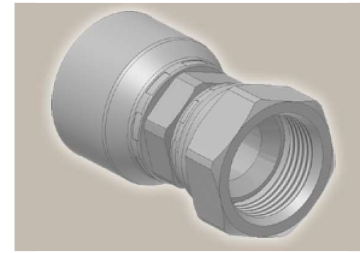
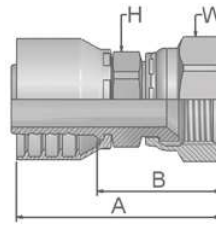


06/68 Female - JIC 37°
SAE 45° Dual Flare
Swivel - Straight
ISO12151-5-SWS - DKJ



*New 3S-Fitting-Design - more information see Cc-Index

Part Number		Hose I.D.				Thread	A	B	H	W
46 series	48 series	DN	Inch	Size	mm	UNF	mm	mm	mm	mm
16846-4-4	10648-4-4*	6	1/4	-4	6.4	7/16x20	48	24	13	14
	10648-5-4*	6	1/4	-4	6.4	7/16x20	52	29	14	17
16846-5-4		6	1/4	-4	6.4	1/2x20	49	25	13	17
10646-6-4		6	1/4	-4	6.4	1/2x20	53	30	14	17
	10648-6-4*	6	1/4	-4	6.4	9/16x18	55	31	14	19
16846-5-5		8	5/16	-5	7.9	9/16x18	51	27	13	19
	16848-5-5	8	5/16	-5	7.9	1/2x20	54	31	14	17
10646-6-5	10648-6-5	8	5/16	-5	7.9	1/2x20	54	30	14	17
16846-8-5	16848-8-5	8	5/16	-5	7.9	9/16x18	53	29	14	19
16846-4-6	16848-4-6	10	3/8	-6	9.5	3/4x16	57	34	17	22
16846-5-6		10	3/8	-6	9.5	7/16x20	50	27	14	17
	16848-5-6	10	3/8	-6	9.5	1/2x20	51	29	14	17
10646-6-6		10	3/8	-6	9.5	9/16x18	52	29	14	17
	10648-6-6*	10	3/8	-6	9.5	9/16x18	52	30	17	19
	10648-8-6*	10	3/8	-6	9.5	3/4x16	49	26	17	19
16846-8-6		10	3/8	-6	9.5	3/4x16	52	30	17	22
16846-10-6	16848-10-6	10	3/8	-6	9.5	3/4x16	56	34	17	22
10646-6-8	10648-6-8	12	1/2	-8	12.7	7/8x14	59	36	22	27
	10648-8-8*	12	1/2	-8	12.7	9/16x18	55	32	22	19
16846-8-8		12	1/2	-8	12.7	3/4x16	56	34	22	22
	10648-10-8*	12	1/2	-8	12.7	3/4x16	56	32	22	22
16846-10-8		12	1/2	-8	12.7	7/8x14	59	36	22	27
10646-12-8	10648-12-8	12	1/2	-8	12.7	7/8x14	62	38	22	27
16846-8-10	16848-8-10	16	5/8	-10	15.9	1 1/16x12	62	39	27	32
	10648-10-10*	16	5/8	-10	15.9	3/4x16	57	32	22	22
16846-10-10		16	5/8	-10	15.9	7/8x14	60	35	22	27
10646-12-10		16	5/8	-10	15.9	7/8x14	64	39	27	32
	10648-12-10*	16	5/8	-10	15.9	1 1/16x12	63	39	24	32
16846-8-12	16848-8-12	19	3/4	-12	19.1	1 1/16x12	58	32	24	22
16846-10-12	16848-10-12	19	3/4	-12	19.1	3/4x16	61	35	24	27
10646-12-12		19	3/4	-12	19.1	7/8x14	67	41	27	32
	10648-12-12*	19	3/4	-12	19.1	1 1/16x12	65	40	27	32
10646-14-12	10648-14-12	19	3/4	-12	19.1	1 1/16x12	68	42	30	36
10646-16-12	10648-16-12	19	3/4	-12	19.1	1 1/16x12	71	45	32	41
10646-12-16	10648-12-16	25	1	-16	25.4	1 5/16x12	73	44	32	32
10646-16-16		25	1	-16	25.4	1 1/16x12	75	46	32	41
	10648-16-16*	25	1	-16	25.4	1 5/16x12	78	45	32	41
10646-20-16		25	1	-16	25.4	1 5/8x12	80	50	41	50
	10648-20-16*	25	1	-16	25.4	1 5/8x12	82	50	32	50
10646-16-20		31	1 1/4	-20	31.8	1 5/16x12	87	49	41	41
	10648-16-20	31	1 1/4	-20	31.8	1 5/16x12	97	50	46	41
10646-20-20		31	1 1/4	-20	31.8	1 5/8x12	89	51	46	50
	10648-20-20	31	1 1/4	-20	31.8	1 5/8x12	100	53	46	50
	10648-24-24	38	1 1/2	-24	38.1	1 7/8x12	98	60	55	60
	10648-32-32	51	2	-32	50.8	2 1/2x12	120	72	65	75

46/48 Series

Approved **fitting series** for hose types, depending on size: Also available in stainless steel. Details can be found in CAT 4400.1/UK

- 46** or **48** 441 461LT 462 462TC 462ST 629PU 692PU Twin
- 46** 463 492 492ST 492TC 692 692Twin 692TC BCH1
- 48** 301SN 304 387 387ST 387TC 421RH 421SN 426 421TC 436 441RH 462PU 462PU Twin BCH2 HT2 ...
- 471TC 477 477ST 477TC 477RH 487 487ST 487TC 493 787 787TC 787ST 797 797TC 797ST 811 881